



# **Network Indoor Station**

## **Configuration Guide**

# Legal Information

## User Manual

©2019 Hangzhou Hikvision Digital Technology Co., Ltd.

## About this Manual

This Manual is subject to domestic and international copyright protection. Hangzhou Hikvision Digital Technology Co., Ltd. ("Hikvision") reserves all rights to this manual. This manual cannot be reproduced, changed, translated, or distributed, partially or wholly, by any means, without the prior written permission of Hikvision.

Please use this user manual under the guidance of professionals.

## Trademarks

**HIKVISION** and other Hikvision marks are the property of Hikvision and are registered trademarks or the subject of applications for the same by Hikvision and/or its affiliates. Other trademarks mentioned in this manual are the properties of their respective owners. No right of license is given to use such trademarks without express permission.

## Disclaimer

TO THE MAXIMUM EXTENT PERMITTED BY APPLICABLE LAW, HIKVISION MAKES NO WARRANTIES, EXPRESS OR IMPLIED, INCLUDING WITHOUT LIMITATION THE IMPLIED WARRANTIES OF MERCHANTABILITY AND FITNESS FOR A PARTICULAR PURPOSE, REGARDING THIS MANUAL. HIKVISION DOES NOT WARRANT, GUARANTEE, OR MAKE ANY REPRESENTATIONS REGARDING THE USE OF THE MANUAL, OR THE CORRECTNESS, ACCURACY, OR RELIABILITY OF INFORMATION CONTAINED HEREIN. YOUR USE OF THIS MANUAL AND ANY RELIANCE ON THIS MANUAL SHALL BE WHOLLY AT YOUR OWN RISK AND RESPONSIBILITY.

REGARDING TO THE PRODUCT WITH INTERNET ACCESS, THE USE OF PRODUCT SHALL BE WHOLLY AT YOUR OWN RISKS. HIKVISION SHALL NOT




TAKE ANY RESPONSIBILITIES FOR ABNORMAL OPERATION, PRIVACY LEAKAGE OR OTHER DAMAGES RESULTING FROM CYBER ATTACK, HACKER ATTACK, VIRUS INSPECTION, OR OTHER INTERNET SECURITY RISKS; HOWEVER, HIKVISION WILL PROVIDE TIMELY TECHNICAL SUPPORT IF REQUIRED.

SURVEILLANCE LAWS VARY BY JURISDICTION. PLEASE CHECK ALL RELEVANT LAWS IN YOUR JURISDICTION BEFORE USING THIS PRODUCT IN ORDER TO ENSURE THAT YOUR USE CONFORMS THE APPLICABLE LAW. HIKVISION SHALL NOT BE LIABLE IN THE EVENT THAT THIS PRODUCT IS USED WITH ILLEGITIMATE PURPOSES.

IN THE EVENT OF ANY CONFLICTS BETWEEN THIS MANUAL AND THE APPLICABLE LAW, THE LATER PREVAILS.

# Symbol Conventions

The symbols that may be found in this document are defined as follows.

Symbol	Description
 <b>Danger</b>	Indicates a hazardous situation which, if not avoided, will or could result in death or serious injury.
 <b>Caution</b>	Indicates a potentially hazardous situation which, if not avoided, could result in equipment damage, data loss, performance degradation, or unexpected results.
 <b>Note</b>	Provides additional information to emphasize or supplement important points of the main text.

# Contents

1 Local Operation .....	1
1.1 Activate Indoor Station .....	1
1.2 Configuration Settings .....	1
1.2.1 Set Indoor Station Network Parameters .....	1
1.2.2 Set SIP Server .....	2
1.2.3 Set Linked Device IP .....	3
1.2.4 Set Indoor Station No. ....	5
1.2.5 Add Camera .....	6
1.2.6 Zone and Alarm Settings .....	7
1.3 Password Settings .....	9
1.4 Synchronize Time .....	10
1.5 Sound Settings .....	11
1.6 Restore Indoor Station .....	12
1.7 System Maintenance .....	13
1.8 Linked to the Mobile Client .....	15
2 Remote Operation via the client software .....	16
2.1 Activate Device Remotely .....	16
2.2 Device Management .....	16
2.2.1 Add Video Intercom Devices .....	17
2.2.2 Modify Network Information .....	19
2.2.3 Reset Password .....	20
2.3 System Configuration .....	21

2.4 Remote Configuration ..... 22

    2.4.1 System ..... 22

    2.4.2 Video Intercom ..... 27

    2.4.3 Network ..... 34

2.5 Person and Card Management ..... 37

    2.5.1 Organization Management ..... 38

    2.5.2 Person Management ..... 39

# 1 Local Operation

## 1.1 Activate Indoor Station

You can only configure and operate the indoor station after creating a password for the device activation.

### Steps

1. Power on the device. It will enter the activation page automatically.
2. Create a password and confirm it.
3. Tap **OK** to activate the indoor station.

---

### Note

We highly recommend you to create a strong password of your own choosing (using a minimum of 8 characters, including at least three kinds of following categories: upper case letters, lower case letters, numbers, and special characters) in order to increase the security of your product. And we recommend you reset your password regularly, especially in the high security system, resetting the password monthly or weekly can better protect your product.

---

## 1.2 Configuration Settings

Configuration settings is required before starting using the indoor station. It is necessary to set the indoor station network, room No., linked devices, device time display, and so on.

### 1.2.1 Set Indoor Station Network Parameters

Network connection is mandatory for the use of the indoor station. Set the network parameters after activating the indoor station. Only when the IP address of the indoor station is in the same network segment as other devices, it can work properly in the same system.

### Steps



---

### Note

The default IP address of the indoor station is 192.0.0.64.

---

Two ways are available for you to set IP address: DHCP, and set IP address manually.

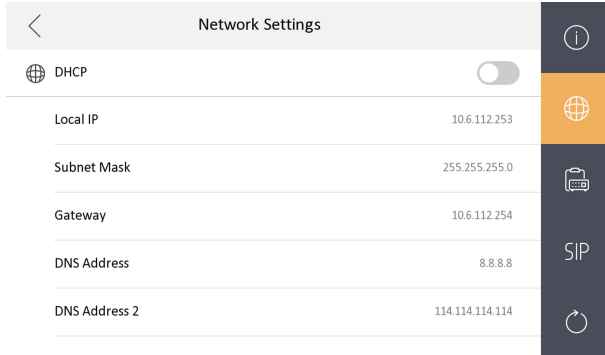
1. Tap **Settings** →  → **Configuration** →  to enter the network settings page.

---

 **Note**

Default admin password is 888999.

---



**Figure 1-2 Network Settings**

2. Enable **DHCP**, then the indoor station can search and get an IP address automatically.

---

 **Note**

Skip the following steps if you have enabled DHCP.

---

3. Set the IP address manually.

### 1.2.2 Set SIP Server

A SIP server connection is required and necessary for the indoor station to guarantee the connection between the indoor station and the management center (master station) in the same video intercom system. 2 types of SIP protocol are available for the indoor station: Private Protocol, and Standard Protocol.



### Note

- Rebooting the indoor station is required when you switch the SIP protocol between the private SIP protocol and the standard SIP protocol.
  - All linked device IP should be configured again after you change the SIP protocol type.
  - The indoor extension does not support SIP sever settings.
- 

### 1.2.3 Set Linked Device IP

Linked network parameters refers to the network parameters of devices (like door station, doorphone, master station, center, etc.), to which the indoor station is linked. Linked devices for the indoor station refers to door station, center, master station, and doorphone.

With the private SIP protocol, intercom can be realized only when all these devices are in the same network segment with the indoor station.

With the standard SIP protocol, intercom can be realized when all these devices support the standard SIP protocol.

### Steps

#### Note

- The doorphone does not support adding with the standard SIP protocol.
  - Here take door station network settings as example.
- 

1. Tap **Settings** →  → **Configuration** →  to enter the device management page.
- 

#### Note

Default admin password is 888999.

---

## Network Indoor Station Configuration Guide

Device Management		+
Main Door Station (D Series)	192.0.0.65	i
SIP Server	0.0.0.0	globe
Center	10.6.112.14	SIP
Master Station	0.0.0.0	refresh
Main Doorphone	0.0.0.0	

**Figure 1-3 Device Management (Private SIP)**

Device Management		+
Main Door Station (D Series)	192.0.0.65	i
Center	0.0.0.0	globe
Master Station		SIP

**Figure 1-4 Device Management (Standard SIP)**

2. Tap **Main Door Station** to pop up the device information dialog.

ID	IP Address	Build Number	Status	Control Icons
523079832	10.7.115.162	V1.5.1build 190116	Activate	Refresh, Settings
612815852	192.0.0.65	V1.4.27build 190125	Activate	Refresh, Settings
808143078	10.7.115.177	V1.5.0build 180613	Activate	Refresh, Settings
201706232	10.7.115.88	V1.5.0build 180613	Activate	Refresh, Settings
216756473	10.7.115.178	V1.5.1build 190102	Activate	Refresh, Settings
C22713330				Refresh, Settings

**Figure 1-5 Device Information**

**Restore the door station via indoor station.**

Tap to restore the parameters of the door station.

**Sync**

Tap to synchronize the language of door station to indoor station.

3. Select the device to link. Edit the network parameters.

## 1.2.4 Set Indoor Station No.

Indoor station No. and the indoor extension No. are numbers, which can be dialed by other devices to call the indoor station and the indoor extension in an intercom system. The indoor station No., is composed of the floor No. and the room No.

The indoor extension No. Should be a numeric from 1 to 5.

Up to 5 indoor extensions can be set for 1 indoor station.

### Steps

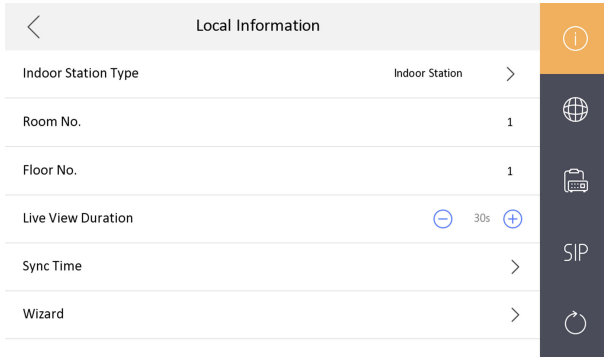
1. Tap **Settings** → → **Configuration** → to enter the indoor station No. settings page.

---

### Note

Default admin password is 888999.

---



**Figure 1-6 Set Indoor Station No.**

2. Select **Indoor Station** to set the indoor station No. (Room No.) and the floor No.
3. Select **Indoor Extension** to set the indoor extension No. and the room name.

## 1.2.5 Add Camera

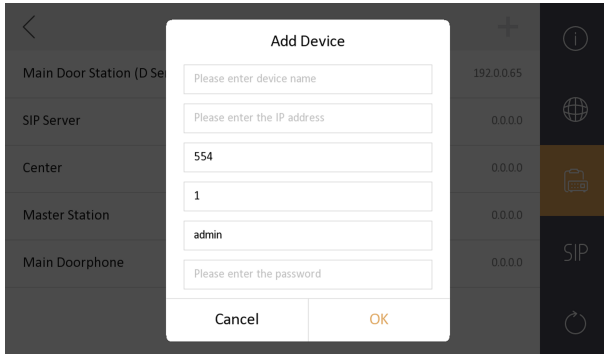
### Steps

1. Tap **Settings** → → **Configuration** → to enter the device management page.

### **Note**

Default admin password is 888999.

2. Tap **+** to pop up the dialog box.



**Figure 1-7 Add Camera**

3. Enter the device name and IP address.
4. Enter the password of the camera.
5. Tap **OK** to add the camera.

## 1.2.6 Zone and Alarm Settings

### Zone Settings

You can set the zone type, alarm type and delay time and other parameters of 8 zones.


#### Before You Start

Tap **Settings** →  → **Preference** to enable **Alarm**.

#### Steps

##### **Note**

Arming status page and zone settings page are hidden by default. You should enable alarm function first.

1. Tap **Settings** →  to enter the zone settings page.

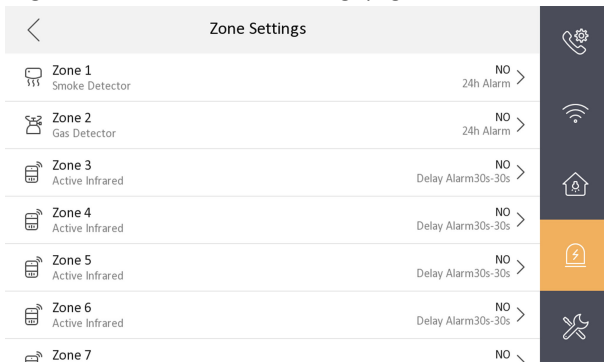


Figure 1-8 Zone Settings

2. Press a zone to pop up the zone editing dialogue box.
3. Set the zone type, alarm type, status of arming status, entering delay, and exiting delay.
4. Tap **OK** to save the settings.

### Note

- 7 zone types are selectable: Panic Button, Door Magnetic, Smoke Detector, Active Infrared, Passive Infrared, Gas Detector, and Doorbell.
  - 3 alarm types are selectable: 24h Alarm, Instant Alarm, and Delay Alarm. Set the alarm type as 24h alarm, and the zone will be armed for 24h. Set the alarm type as instant alarm, and the zone will alarm once it's triggered. Set the alarm type as delay alarm, and you should set the entering delay duration and exiting delay duration.
  - Both the entering delay duration and the exiting delay duration are from 30s to 60s.
  - For Gas Detector and Smoke Detector, the alarm type is set as default 24h alarm. The alarm type of them can not be changed.
- 

## Arming Mode Settings

4 arming modes can be configured: stay mode, away mode, sleeping mode and custom mode.

### Before You Start

Tap **Settings** →  → **Preference** to enable **Alarm**.


### Steps

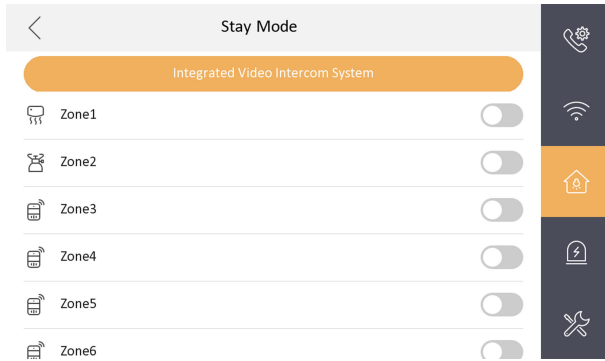
---

#### Note

Arming status page and zone settings page are hidden by default. You should enable alarm function first.

---

1. Tap **Settings** →  to enter the arming mode settings page.
2. Tap **Stay Mode**, **Away Mode**, **Sleeping Mode**, or **Custom** to enter the page.



**Figure 1-9 Arming Mode Settings**

3. Arm the selected zone.

### Note


- Zones are configurable on the arming mode page.
- 24H alarm zone including smoke detector zone and gas detector zone will be triggered even if they are disabled.
- Arming mode settings should be configured with the settings of arming status on the user page of the device.

## 1.3 Password Settings

You can edit the admin password (configuration password), duress code, unlock password and arm/disarm password of the indoor station.

You can edit the admin password (configuration password) and arm/disarm password of the indoor extension.

### Steps

1. Tap **Settings** →  → **Password** to enter the password settings page.
2. Tap **Admin**, **Unlock**, **Arm/Disarm**, or **Duress Code** to pop up the password settings dialog box.

#### **Admin**

The admin password is required. The admin password is used to configure parameters.

#### **Unlock**


Enter the unlock password and room No. on the door station to open the door.

### Arm/Disarm

Arm or disarm the zone for the indoor station by entering the arm/disarm password.

---

 **Note**

Arm/Disarm settings page is hidden by default. Tap **Settings** →  → **Preference** to enable **Alarm**, you can set the arm/disarm password.

---

### Duress Code

When you are hijacked and forced to open the door, you can enter the duress code. An alarm will be triggered to notify the management center secretly.

---

 **Note**

The duress code and the unlock password cannot be the same.

---

3. Enter the old password.
4. Create a new password and confirm it.
5. Tap **OK** to save the settings.


---

 **Note**

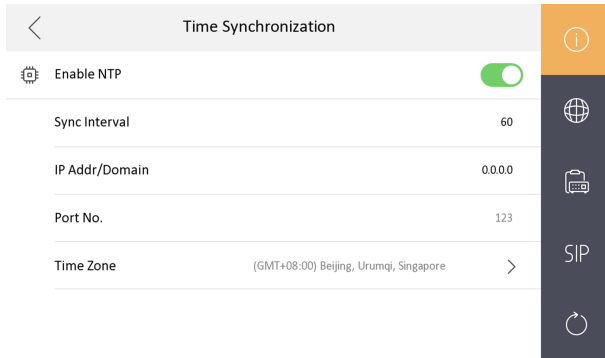
- The default admin password (configuration password) is 888999.
  - The default arm/disarm password, and scene password are 123456.
  - Indoor Extension only supports admin password and arm/disarm password.
- 

## 1.4 Synchronize Time

### Steps

1. Tap **Settings** →  → **Configuration** → **Local Information** → **Sync Time** to enter the time synchronization page.





**Figure 1-10 Sync Time**

2. Enable **Enable NTP**.
3. Set the synchronizing interval, enter the IP address/domain of NTP server and port No., and select the time zone.

---

### **Note**


The default unit of synchronizing interval is minute.

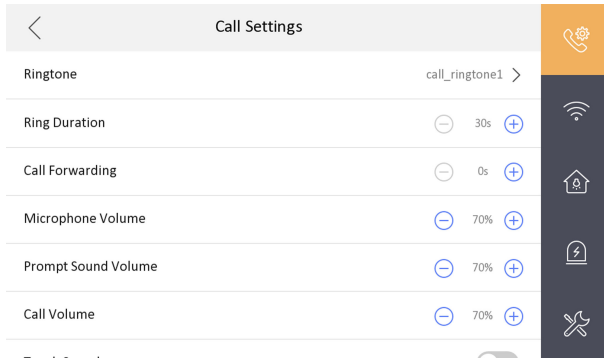
---

## 1.5 Sound Settings

You can set the ringtone, ring duration, call forwarding time, volume of microphone and loudspeaker, enable/disable touch sound and auto-answer function on call settings page.

### Steps

1. Tap **Settings** →  to enter the call settings page.



**Figure 1-11 Call Settings**

### 2. Set corresponding parameters.

#### **Ringtone**

There are 3 ringtones by default, and you can custom and import at most 4 ringtones via Batch Configuration Tool or iVMS-4200 Client Software.

**Ring Duration:** The maximum duration of indoor station when it is called without being accepted. Ring duration ranges from 30s to 60s.

#### **Call Forwarding (Time)**

The ring duration limit beyond which the call is automatically forwarded to eh mobile phone designated by the resident. Call forwarding (time) ranges from 0s to 20s.

#### **Auto-answer**

After enabling the auto-answer function, the visitor can leave the voice message to the indoor station from the door station, the master station, or the client software.

---

#### **Note**

- Auto-answer function is only available to 8-series indoor stations with TF card function and 6-series indoor stations.
  - Indoor Extension does not support the ring duration settings, call forwarding settings, or auto-answer function.
- 

## 1.6 Restore Indoor Station

### Steps

1. Tap **Settings** →  → **Configuration** →  to enter the restore default settings page.




**Figure 1-12 Restore Default Settings**

2. Tap **Restore Default Settings** to restore the default settings and reboot the system.
3. Tap **Restore All** to restore all parameters and reboot the system.

## 1.7 System Maintenance

You can format or install TF card, clear the screen, view the version information of the indoor station and reboot the system on the system maintenance page.

Tap **Settings** →  to enter the system maintenance page.

### Format or Install TF Card

Tap **TF Card** to format the TF card.

### Clear Screen

Enable **Clear Screen** to clear the screen.

---

#### **Note**

After enabling Clear Screen function, press and hold the Unlock key to exit the clear screen mode.

---

### Reboot Device

Tap **Reboot Device** to reboot the system.

### Language

Tap **System Language** to change the system language.

---

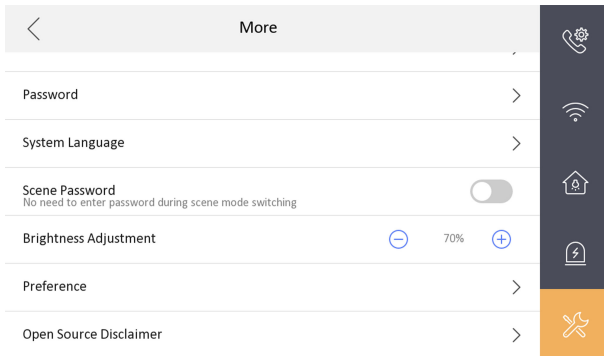
#### **Note**

The indoor station supports 12 languages.

---

### Brightness Adjustment

Tap + or - to adjust the brightness.




**Figure 1-13 Brightness Adjustment**

### Preference

Tap **Preference** to enter the preference page.


Enable **Call Elevator** and **Alarm**.

### Upgrade Device

Tap **Configuration** →  to enter the restore default settings page.

Tap **Upgrade** to get the upgrade package.

## Do Not Disturb

Tap **Settings** →  to enter the call settings page.

Tap **Do Not Disturb** to choose **Close**, **All Day** or **Schedule**.

---

### **Note**

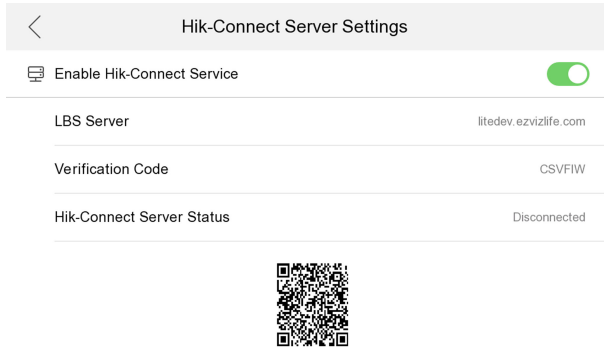
If you choose the **Schedule**, you should set the start time and end time.

---

## 1.8 Linked to the Mobile Client

### Steps

1. Tap **Settings** →  → **Hik-Connect Service** to enter the settings page.



**Figure 1-14 Hik-Connect Server Settings**

2. Enable **Enable Hik-Connect Service**.
  3. Edit **LBS Server** and **Verification Code**.
- 

### **Note**

Verification code is used to add the device to mobile client.

---

4. **Optional:** Scan QR code on the screen to add the device to the mobile client.

## 2 Remote Operation via the client software

The Video Intercom module provides remote control and configuration on video intercom products via the iVMS-4200 client software.

### 2.1 Activate Device Remotely

You can only configure and operate the indoor station after creating a password for the device activation.

#### Before You Start

Default parameters of door station are as follows:

- Default IP Address: 192.0.0.64.
- Default Port No.: 8000.
- Default User Name: admin.

#### Steps

1. Run the client software, enter **Device Management**, check the **Online Device** area.
2. Select an inactivated device and click the **Activate**.
3. Create a password, and confirm the password.

---

#### Note

We highly recommend you to create a strong password of your own choosing (using a minimum of 8 characters, including at least three kinds of following categories: upper case letters, lower case letters, numbers, and special characters) in order to increase the security of your product. And we recommend you reset your password regularly, especially in the high security system, resetting the password monthly or weekly can better protect your product.

---

4. Click **OK** to activate the device.

### 2.2 Device Management

Device management includes device activation, adding device, editing device, and deleting device, and so on.


After running the iVMS-4200, video intercom devices should be added to the client software for remote configuration and management.

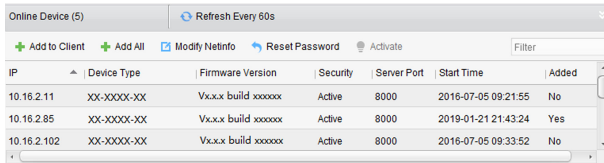
### 2.2.1 Add Video Intercom Devices

#### Steps

 **Note**

- You can add at most 512 indoor stations and master stations in total to the client, and add at most 16 door stations to the client.
- For video intercom devices, you are required to create the password to activate them before they can be added to the software and work properly.
- You can add online video intercom devices, and add them manually. Here take adding online video intercom devices as example.

1. Click  on the control panel, or click **Tools → Device Management** to open the Device Management page.
2. Click the **Device** tap.
3. On the Device Type panel on the right, you can select **Hikvision Device** to add video intercom devices.
4. The active online devices in the same local subnet with the client software will be displayed on the **Online Device** area. You can click **Refresh Every 60s** to refresh the information of the online devices.



IP	Device Type	Firmware Version	Security	Server Port	Start Time	Added
10.16.2.11	XX-XXXX-XX	Vx.x.x build xxxxxx	Active	8000	2016-07-05 09:21:55	No
10.16.2.85	XX-XXXX-XX	Vx.x.x build xxxxxx	Active	8000	2019-01-21 21:43:24	Yes
10.16.2.102	XX-XXXX-XX	Vx.x.x build xxxxxx	Active	8000	2016-07-05 09:33:52	No

**Figure 2-1 Online Device List**

 **Note**

To add online devices to the software, you are required to change the device IP address to the same subnet with your computer first.

5. Select the devices to be added from the list.
6. Click **Add to Client** to open the device adding dialog box.

7. Input the required information.

**Nickname**

Edit a name for the device as you want.

**Address**

Input the device's IP address. The IP address of the device is obtained automatically in this adding mode.

**Port**

Input the device port No. The default value is 8000.

**User Name**

Input the device user name. By default, the user name is admin.

**Password**

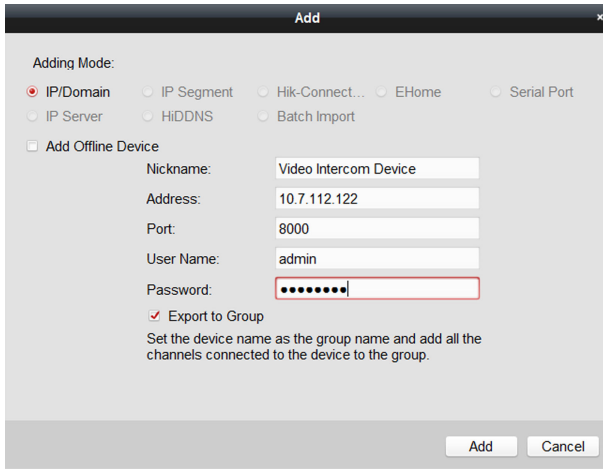
Input the device password. By default, the password is 12345.

8. **Optional:** You can check the checkbox Export to Group to create a group by the device name. All the channels of the device will be imported to the corresponding group by default.

The client also provides a method to add the offline devices. Check the checkbox **Add Offline Device**, input the required information and the device channel number and alarm input number, and then click **Add**. When the offline device comes online, the software will connect it automatically.

9. Click **Add** to add the device.





The screenshot shows a dialog box titled "Add" with a close button (X) in the top right corner. The "Adding Mode:" section contains several radio button options: "IP/Domain" (selected), "IP Segment", "Hik-Connect...", "EHome", "Serial Port", "IP Server", "HIDDNS", and "Batch Import". Below this is a checkbox for "Add Offline Device". Underneath, there are input fields for "Nickname" (containing "Video Intercom Device"), "Address" (containing "10.7.112.122"), "Port" (containing "8000"), "User Name" (containing "admin"), and "Password" (containing seven dots). A checked checkbox "Export to Group" is located below the password field. A note below the checkbox reads: "Set the device name as the group name and add all the channels connected to the device to the group." At the bottom right, there are "Add" and "Cancel" buttons.

**Figure 2-2 Add Device by IP Address**

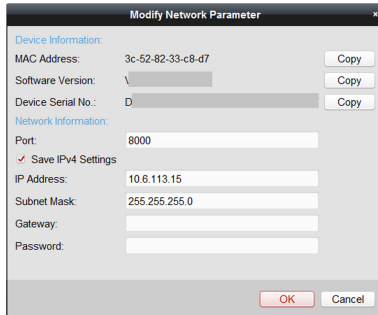
---

 **Note**

- **Add Multiple Online Devices:** If you want to add multiple online devices to the client software, click and hold **Ctrl** key to select multiple devices, and click **Add to Client** to open the device adding dialog box. In the pop-up message box, enter the user name and password for the devices to be added.
  - **Add All the Online Devices:** If you want to add all the online devices to the client software, click **Add All** and click **OK** in the pop-up message box. Then enter the user name and password for the devices to be added.
- 

### 2.2.2 Modify Network Information

Select the device from the online list, click **Modify Netinfo**, and then you can modify the network information of the selected device.



**Figure 2-3 Modify Network Information**

### Note

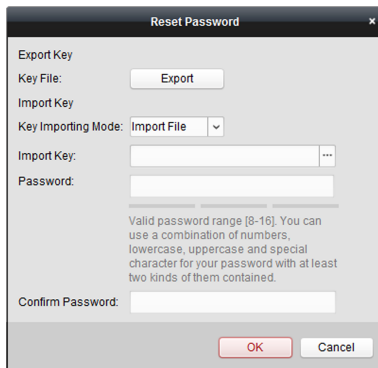
You should enter the admin password of the device in the **Password** field of the pop-up window to modify the parameters.

## 2.2.3 Reset Password

According to the different video intercom devices, the software provides two different methods for restoring the default password or resetting the password. Select the device from the online device list, click **Reset Password**.

### Steps

1. Click **Export** to save the device file on your computer.



**Figure 2-4 Reset Password**

2. Send the file to our technical engineers.

3. Reset password.
  - This choice is available to door stations.

Our technical engineer will send you a file to you. After receiving a file from the technical engineer, select **Import File** from Key Importing Mode drop-down list and click ... to import the file.
  - This choice is available to available to indoor stations and master stations.

Click **Import** and select the file received from the technical engineer.
4. Input new password in text fields of **Password** and **Confirm Password**.
5. Click **OK** to reset the password.

---

 **Note**

We highly recommend you to create a strong password of your own choosing (using a minimum of 8 characters, including at least three kinds of following categories: upper case letters, lower case letters, numbers, and special characters) in order to increase the security of your product. And we recommend you reset your password regularly, especially in the high security system, resetting the password monthly or weekly can better protect your product.

---


## 2.3 System Configuration

You can configure the video intercom parameters accordingly.

### Steps

1. Click **Control Panel** → **Maintenance and Management** → **System Configuration** → **Video Intercom** to enter the system configuration page.
2. Click **Video Intercom** to enter the **Video Intercom Setting** page.
3. Input the required information.

#### **Ringtone**

Click ... and select the audio file from the local path for the ringtone of indoor station. Optionally, you can click  for a testing of the audio file.

#### **Max. Ring Duration**

Input the maximum duration of the ringtone, ranging from 15 seconds to 60 seconds.

#### **Max. Speaking Duration with Indoor Station**

Input the maximum duration of speaking with the indoor station, ranging from 120 seconds to 600 seconds.

### Max. Speaking Duration with Door Station

Input the maximum duration of speaking with the door station, ranging from 90 seconds to 120 seconds.

4. Click **Save** to save the settings.

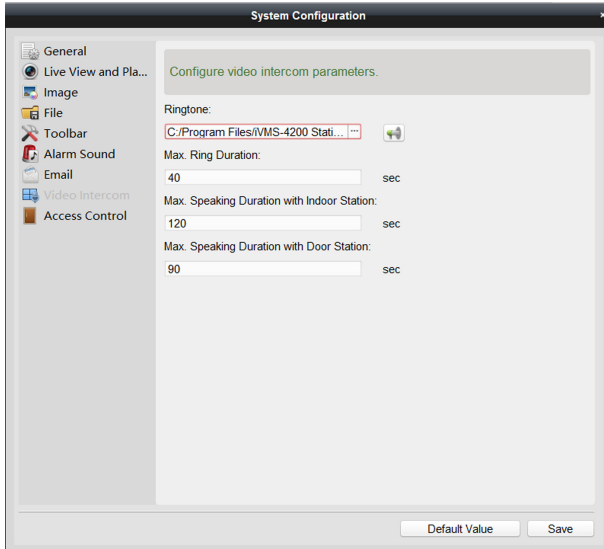


Figure 2-5 System Configuration

## 2.4 Remote Configuration

In the device list area, select a device and click **Remote Configuration** to enter the remote configuration page.

### 2.4.1 System

Click **System** on the remote configuration page to display the device information: Device Information, General, Time, System Maintenance, User, and RS-485.

## Device Information

Click **Device Information** to enter device basic information page. You can view basic information (the device type, and serial No.), and version information of the device.

Displaying the Device Information	
<b>Basic Information</b>	
Device Type:	DS-KH6320-WTE1
Device Serial No.:	DS-KH6320-WTE10120181205WR226732757CLU
<b>Version Information</b>	
Version: V2.0.2 build 190110	
Hardware Version: 0x1700	

**Figure 2-6 Device Information**

## General

Click **General** to enter device general parameters settings page. You can view and edit the device name and device ID.

Device Information	
Device Name:	Embedded Net VIS
Device No.:	255
<input type="button" value="Save"/>	

**Figure 2-7 General**

## Time

Click **Time** to enter the device time settings page.

Configuring the Time Settings (e.g., NTP)

**Time Zone**

Select Time Zone: (GMT+08:00) Beijing, Hong Kong, Perth, Singa... ▾

**Enable NTP**

Server Address: 0.0.0.0

NTP Port: 123

Sync Interval: 60 Minute(s)

**Enable DST**

Start Time: April ▾ First Week ▾ Sun ▾ 2 :00

End Time: October ▾ Last Week ▾ Sun ▾ 2 :00

DST Bias: 60 min ▾

Synchronization Save

**Figure 2-8 Synchronize Time**

Select **Time Zone** or **Enable NTP**. Click **Save** to save the time settings.

- Time Zone
  - Select a time zone from the drop-down list menu.
  - Click the **Synchronization**.
- NTP
  - Check the checkbox of Enable NTP to enable NTP.
  - Enter the server address, NTP port, and synchronization interval.
- DST
  - Check the checkbox of Enable DST to enable DST.
  - Enter the start time and end time of DST, and set the DST bias.

---

 **Note**

The default port No. is 123.

---

### System Maintenance

Click **System Maintenance** to enter the page.

**System Maintenance**

**System Management**

Reboot  
Restore Default Settings  
Restore All  
Import Configuration File  
Export Configuration File

**Remote Upgrade**

Select Type: Upgrade File

Select File: ... Upgrade

Progress: [Progress Bar]

**Language**

English Save

**Figure 2-9 System Maintenance**

- Click **Reboot** and the system reboot dialog box pops up. Click **Yes** to reboot the system.
- Click **Restore Default Settings** to restore the default parameters.
- Click **Restore All** to restore all parameters of device and reset the device to inactive status.

---

 **Note**

- Click **Restore Default Settings**, all default settings, excluding network parameters, will be restored.
  - Click **Restore All**, all default settings, including network parameters, will be restored. The device will be reset to inactivated status.
- 
- Click **Import Configuration File** and the import file window pops up. Select the path of remote configuration files. Click **Open** to import the remote configuration file. The configuration file is imported and the device will reboot automatically.

- Click **Export Configuration File** and the export file window pops up. Select the saving path of remote configuration files and click **Save** to export the configuration file.
- Click ... to select the upgrade file and click **Upgrade** to remote upgrade the device. The process of remote upgrade will be displayed in the process bar.
- Select a language, and click **Save** to change the device system language.

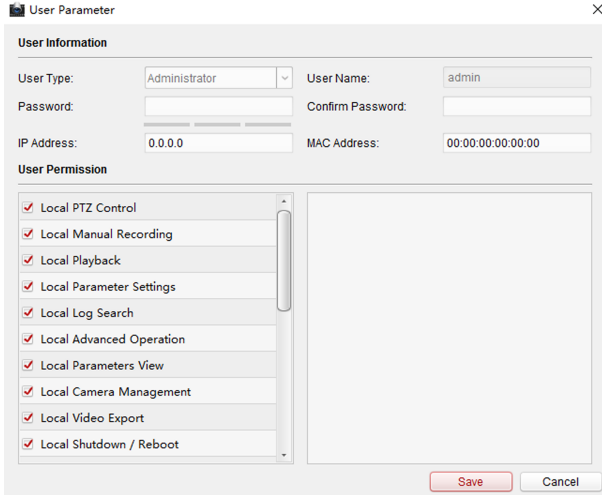
 **Note**

- The device supports 5 languages: English, Russian, French, Portuguese, and Spanish.
- Rebooting the device is required after you change the system language.

## User

Click **User** to enter the user information editing page.

Select the user to edit and click **Modify** to enter the user parameter page.



User Parameter

**User Information**

User Type: Administrator User Name: admin

Password: Confirm Password:

IP Address: 0.0.0.0 MAC Address: 00:00:00:00:00:00

**User Permission**

- Local PTZ Control
- Local Manual Recording
- Local Playback
- Local Parameter Settings
- Local Log Search
- Local Advanced Operation
- Local Parameters View
- Local Camera Management
- Local Video Export
- Local Shutdown / Reboot

Save Cancel

Figure 2-10 User Page

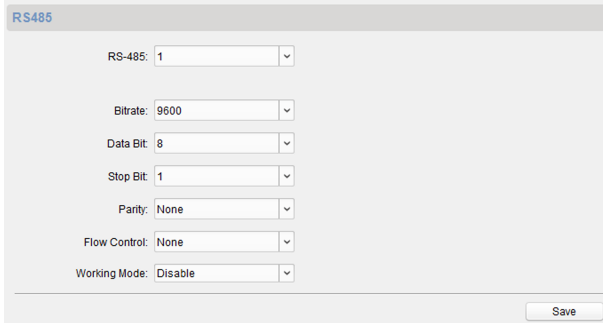


 **Note**

- The new password and confirm password should be identical.
  - After editing the password of device, click refresh button from the device list, the added device will not be there. You should add the device again with new password to operate the remote configuration.
- 

### RS-485

Click **RS485** to enter the RS-485 settings page. You can view and edit the RS-485 parameters of the device.



RS485

RS-485: 1

Btrate: 9600

Data Bit: 8

Stop Bit: 1

Parity: None

Flow Control: None

Working Mode: Disable

Save

**Figure 2-11 RS-485 Settings**

 **Note**

For indoor station and master station, there are 3 choices for the working mode: transparent channel, disable, and custom.

---

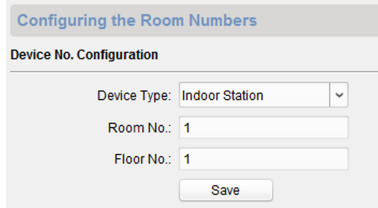
### 2.4.2 Video Intercom

Click **Video Intercom** on the remote configuration page to enter the video intercom parameters settings: Device Number Configuration, Time Parameters, Password, Zone Configuration, IP Camera Information, and Volume Input and Output Configuration, and so on.

### Device ID Configuration

### Steps

1. Click **ID Configuration** to enter device ID configuration page.



Configuring the Room Numbers

Device No. Configuration

Device Type: Indoor Station

Room No.: 1

Floor No.: 1

Save

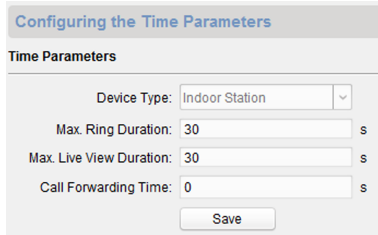
**Figure 2-12 ID Configuration**

2. Select the device type from the drop-down list, and set the corresponding information.
3. Click **Save** to enable the device number configuration.

### Time Parameters

#### Steps

1. Click **Time Parameters** to enter time parameters settings page.



Configuring the Time Parameters

Time Parameters

Device Type: Indoor Station

Max. Ring Duration: 30 s

Max. Live View Duration: 30 s

Call Forwarding Time: 0 s

Save

**Figure 2-13 Time Parameters**

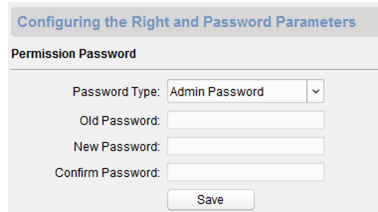
2. Configure the maximum ring duration, maximum live view time, and call forwarding time.
3. Click **Save**.

 **Note**

- Maximum ring duration is the maximum duration of indoor station when it is called without being received. The range of maximum ring duration varies from 30s to 60s.
- Maximum live view time is the maximum time of playing live view of the indoor station. The range of maximum live view time varies from 10s to 60s.
- Call forwarding time refers to the ring duration limit beyond which the call is automatically forwarded to the mobile phone designated by the resident. The range of call forwarding time varies from 0s to 20s.
- For indoor extension, it only requires setting the maximum live view time.

## Password

Click **Password** to enter password changing page.



**Figure 2-14 Password**

For indoor station, you can change the admin password, arm/disarm password, unlock password and duress code.

For indoor extension, only admin password and arm/disarm password need to be configured.

## Zone

### Steps

1. Click **Zone Alarm** to enter the zone settings page.

**Configuring the Zone Parameters**

**Zone Alarm**

Zone No.: 1

Zone Type: Smoke Detector

Alarm Type: 24-hour Alarm

NO/NC: Remain Open

Entering Delay: s

Exiting Delay: s

**Action Settings**

- Select All
- Trigger 1
- Trigger 2

Save

**Figure 2-15 Zone Alarm**

2. Select a zone type from the drop-down list menu.
3. Select an alarm mode from the drop-down list menu.
4. Set the zone status: NO or NC.
5. Set the entering delay, and exiting delay.
6. Select triggers.
7. Click **Save** to enable zone settings.

---

 **Note**

- 7 zone types are supported: Emergency Switch, Door Magnetic Switch, Smoke Detector, Active IR Detector, Passive IR Detector, Combustible Gas Detector, and DoorBell Switch.
- 3 types of alarm mode are supported: Instant Alarm, 24H Alarm, and Delay Alarm.
- When the zone type is set to be Instant Alarm, only under arming mode, the indoor station will receive alarm message when the detector is triggered. Under disarming mode, it will not receive alarm message when the detector is triggered.
- When the zone type is set to be 24H Alarm, the indoor station will receive alarm message when the detector is triggered no matter it is under arming mode or disarming mode.

- When the zone type is set to be Delay Alarm, only under arming mode, the indoor station will receive alarm message when the detector is triggered. Under disarming mode, it will not receive alarm message when the detector is triggered.
  - After setting enter delay time, if OK is pressed within the enter delay time after the alarm, the alarm event will not be uploaded to the management center; if OK is not pressed within the enter delay time after the alarm, the alarm event will be uploaded to the management center.
  - The exit delay is the time between you enable the arming mode and the arming takes effect.
- 

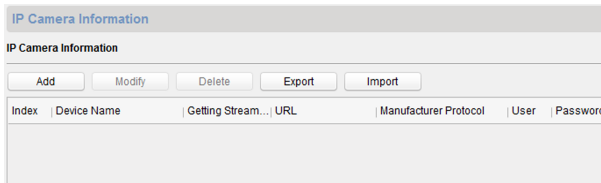
## IP Camera Information

You can add, delete and modify cameras that can be added to the video intercom products, with two ways of getting stream: direct or URL. By exporting and importing the added device information, you can edit added devices parameters in batch.

### Add Camera

#### Steps

1. Click **IP Camera Information** to enter IP camera information page.



**Figure 2-16 IP Camera Information**

2. Click **Add** to pop up the device adding dialog box.
3. Enter corresponding information (device name, IP address, port No., user name, password, etc.), and click **OK**.

---

#### **Note**

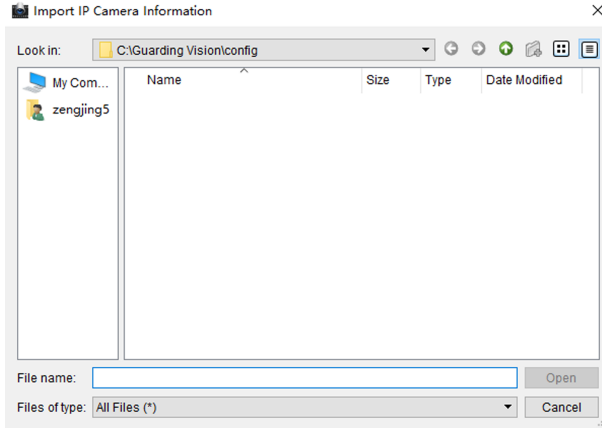
Indoor extension does not support this function.

---

### Export and Import Added Device Information

**Steps**

1. Click **Export** to export the added device information file.
2. Edit parameters of added devices in batch in the exported file.
3. Click **Import** to pop up importing box, and open the edited added device information file.

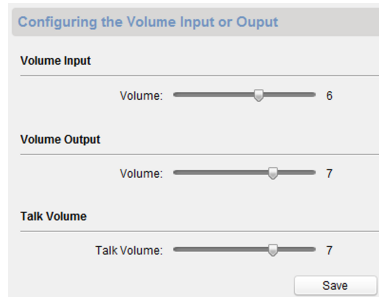


**Figure 2-17 Import Added Device Information**

**Volume Input and Output**

**Steps**

1. Click **Volume Input/Output** to enter the volume input and output page.



**Figure 2-18 Volume Input and Output**

2. Slide the slider to adjust the volume input, volume output and talk volume.

3. Click **Save** to enable the settings.

## Ring Import

### Steps

1. Click **Ring Import** to enter the ring configuration page.

Index	Name	Size	Type	Add	Delete
1				+	X
2				+	X
3				+	X
4				+	X

**Figure 2-19 Ring Import**

2. Click + to add the ring, and click x to delete the imported ring.

### Note

- The ring to be imported should be in the wav format, and the size of the ring cannot be larger than 300k.
- Up to 4 rings can be added.

## Deploy Info

Click **Deploy Info**, you can get the deploy informations.

Index	DeployNo	DeployType	IpAddr
1	1	Real time Deploy	10.6.112.17

**Figure 2-20 Deploy Info**

## SIP Protocol Settings

Click **Intercom Protocol** to enter the SIP settings page.

2 types of SIP protocol are available: Private Protocol, and standard SIP protocol.

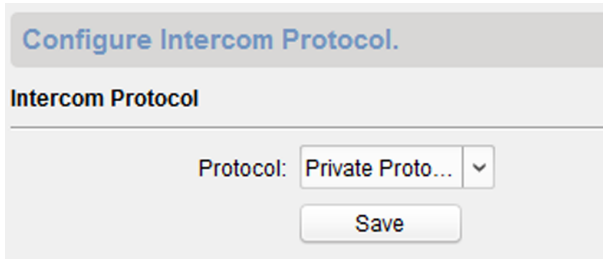


Figure 2-21 SIP Protocol

## Incoming Call Linkage

Enter a short description of your task here (optional).

### Steps

1. Click **Incoming Call Linkage** to enter configuration the page.

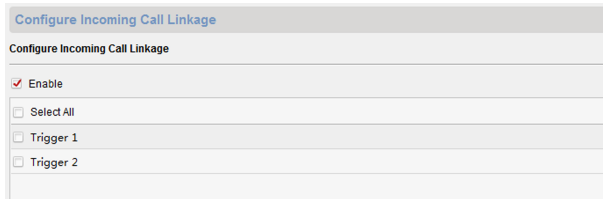


Figure 2-22 Incoming Call Linkage

2. Enable and select triggers.  
When the calling incoming, the alarm you linked will be triggered.

## 2.4.3 Network

### Local Network Configuration

#### Steps

1. Click **Local Network Configuration** to enter local network configuration page.



Configuring the Local Network Parameters

Local Network Configuration

Local IP Address: 10.6.112.253

IP Address Subnet Mask: 255.255.255.0

Default Gateway: 10.6.112.254

Port: 8000

HTTP Port: 80

Save

**Figure 2-23 Local Network Configuration**

2. Enter the local IP address, subnet mask, gateway address, and port No.
3. Click **Save** to enable the settings.

---

 **Note**

- The default port No. is 8000.
  - After editing the local network parameters of device, you should add the devices to the device list again.
- 

### Linked Devices Network Configuration

In the linked devices network configuration page, you can configure the network parameters of master stations, SIP servers and management centers of the same LAN. The devices can be linked to the door station and realize the linkage between these devices.

#### Steps

1. Click **Linked Network Configuration** to enter linked network configuration page.

### Configuring the Network and Sip Parameters

#### Linked Network Configuration

Device Type:	Indoor Station
Master Station IP Address:	0.0.0.0
(Main) Door Station IP Address:	192.0.0.65
SIP Server IP Address:	0.0.0.0
Security Control Panel IP Address:	0.0.0.0
Security Control Panel Port No.:	0
Doorphone IP Address:	0.0.0.0
Main Door Station Type:	Main Door Station (D ...
<input type="button" value="Save"/>	

**Figure 2-24 Linked Network Configuration**

2. Enter the master station IP address, (main) door station IP address, SIP server IP address, management center IP address, and doorphone IP address.
3. Select the main door station type from the drop-down list.
4. Click **Save** to enable the settings.

---

 **Note**

- After adding master station IP Address, the linkage between indoor station and master station can be realized.
  - After adding the door station IP Address, the video intercom between indoor stations of same building can be realized.
  - After adding SIP Server Address IP, the video intercom of same community: video intercom between indoor stations of different building, calling indoor station from outer door station and video intercom between management center and indoors.
  - After adding management center IP Address, the events can be uploaded to the management center.
  - For indoor extension, only parameter about the main indoor station should be configured.
- 

## DNS Settings

The indoor station supports 2 DNS address.

Click **Advanced Settings** to enter DNS address settings page.  
Edit the IP address and click **Save**.



**Figure 2-25 DNS Settings**

## Configure Mobile Client Connection

Configure **Hik-Connect** server parameters before viewing videos via mobile client.

### Before You Start

Make sure the indoor station connects to the network.

### Steps

1. Click **Hik-Connect** to enter configuration page.
2. Enable **Enable Hik-Connect Access**.
3. Enable **Custom** and edit **Service Address**
4. Enter the **Verification Code**.
5. Click **Save**.

## 2.5 Person and Card Management

You can add, edit, and delete the organization and person in Person and Card Management module. Organization and person management is necessary for the video intercom function.

For the first time opening the Access Control module, the following dialog will pop up and you are required to select the scene according to the actual needs. You can select the scene as **Non-residence** and **Residence**.

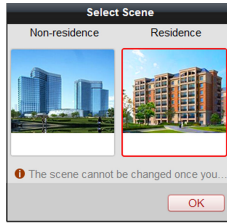


Figure 2-26 Select Scene

**Note**

Once the scene is configured, you cannot change it later.

Click → to enter the **Person and Card Management** page.

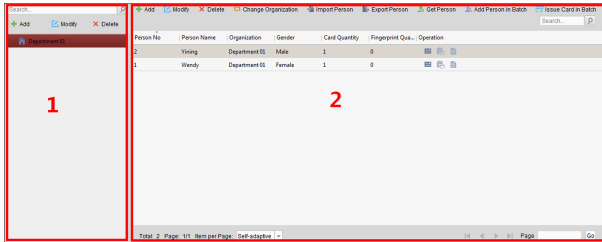


Figure 2-27 Person and Card Management

The page is divided into two parts: Organization Management and Person Management.

Organization Management	You can add, edit, or delete the organization as desired.
Person Management	After adding the organization, you can add the person to the organization and issue card to persons for further management.

### 2.5.1 Organization Management

#### Add Organization

### Steps

1. In the organization list on the left, click **Add** to pop up the adding organization page.
2. Input the **Organization Name** as desired.
3. Click **OK** to save the adding.
4. You can add multiple levels of organizations according to the actual needs.
  - 1) You can add multiple levels of organizations according to the actual needs.
  - 2) Repeat Step 2 and Step 3 to add the sub organization.
  - 3) Then the added organization will be the sub-organization of the upper-level organization.

---

 **Note**

Up to 10 levels of organizations can be created.

---

### Modify and Delete Organization

You can select the added organization and click **Modify** to modify its name.  
You can select an organization, and click **Delete** button to delete it.

---

 **Note**

- The lower-level organizations will be deleted as well if you delete an organization.
  - Make sure there is no person added under the organization, or the organization cannot be deleted.
- 

### 2.5.2 Person Management

After adding the organization, you can add person to the organization and manage the added person such as issuing cards in batch, importing and exporting person's information in batch, etc.

---

 **Note**

Up to 10,000 persons or cards can be added.

---

