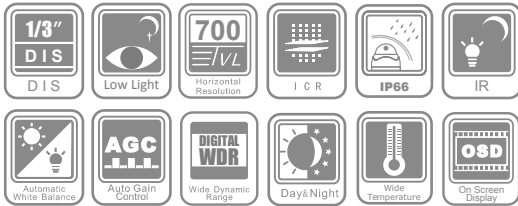


# DS-2CS58A1P(N)-IRS

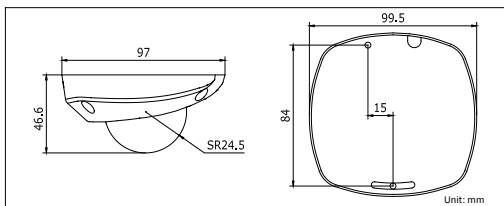
## 700 TVL DIS IR Dome Camera



### Key features

- 1/3" DIS
- Min. illumination: 0.1 Lux @ F1.2 (0 Lux with IR)
- True Day/Night
- 3-axis (pan/tilt/rotation) positioning
- Wide operating temperature range
- IP66 rating
- 20m IR Distance
- OSD Menu

### Dimensions



DS-2CS58A1P(N)-IRS	
Camera	
Image Sensor	1/3" DIS
Signal System	PAL/NTSC
Effective Pixels	976 (H) × 496 (V)
Min. Illumination	0.1 Lux @ (F1.2, AGC ON), 0 Lux with IR
Shutter speed	PAL: 1/50 s to 1/100,000 s, NTSC: 1/60 s to 1/100,000 s
Lens	3.6 mm @ F2.2 (2.8 mm, 6 mm optional)
	Angle of view: 68.4° (3.6 mm)
Lens Mount	M12
Angle Adjustment	Pan: ± 30°, Tilt: 0 - 80°, Rotation: ± 180°
Day & Night	IR cut filter with auto switch
Horizontal Resolution	700 TVL
Synchronization	Internal synchronization
S/N Ratio	More than 62 dB
Menu	
Auto Gain	Low/Middle/High/Off
D/N Mode	Auto / Color / B/W / SMART
White Balance	Auto 1/Auto 2
D-WDR	Low/Middle/High/Off
Motion Detection	On/Off, maximum 6 zones
Language	English/Chinese
Function	Brightness, Contrast, Saturation, Sharpness, NR, Mirror
Interface	
Video Output	1Vp-p composite output (75 Ω/Aviation plug)
Audio In	Built-in Microphone
Audio Output	1-ch audio interface(Aviation plug)
General	
Working Temperature/ Humidity	-40 °C - 60 °C (-40 °F - 140 °F), Humidity 90% or less (non-condensing)
Power Supply	12 VDC
Power Consumption	Max. 2W (Max. 4W with IR cut filter on)
Impact Protection	IEC 60068-2-75 test, Eh, 50J; EN 50102, up to IK07
Ingress Protection	IP66
IR Range	Approx. 10 to 20 meters
Dimensions	97 × 46.6 × 99.5mm (3.82" × 1.83" × 3.92")
Weight	300 g(0.66 lbs)

### Available models

PAL: DS-2CS58A1P-IRS  
 NTSC: DS-2CS58A1N-IRS