

## IP 65 liquid detector • Series 2450 N

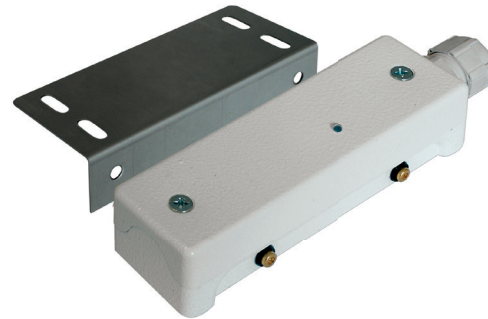
- High mechanical resistance
- Low consumption
- Corrosion-proof system
- Wire or terminal connections
- Alarm signal LED
- Relay output

Sensor detecting water on the floor through 2 gold plated supporting feet.

It is normally used for protection against the flooding of computing centres, boiler rooms, offices, laboratories, etc. The sensor contained into aluminium case epoxy white painting is equipped with a steel support that allows to detect liquid at height ranging from 0 to 11 mm according to specific needs. In alarm condition, relay changes its status and led lights. Remote testing and inhibition functions.

### General specifications

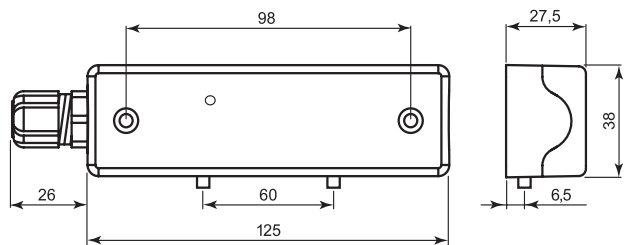
Housing material	Die-cast aluminium, epoxy white painting
Operation	Detection of resistance between feet. Changeover relay output
Type of connection	Wire or terminal
Operating temperature	-15°C ÷ +70°C
Standard equipment	Mounting bracket. 3/8", Press hose M16
IP Degree	See table
Packaging	1 pc. / package



The circuit is oscillating to prevent electrolysis and corrosion problem.

7 wire connection for 2450-N and terminal for 2450-NM: 2 power terminals, 3 terminal for changeover relay output, 1 for remote test, 1 terminal for inhibition. Version 2450-N offers a protection degree IP 67 thanks to full epoxy resin encapsulation. Trimmer adjustable alarm threshold for the resistor in version 2450-NM.

It can not be used with inflammable liquids.



### Order codes

Code	Supply voltage	Consumption in standby	Consumption in alarm	Outputs	N° wires	Cable length	IP Degree	Package weight	Notes
2450-N	12/24 Vdc	10 mA @ 12 Vdc 13 mA @ 24 Vdc	25 mA @ 12 Vdc 32 mA @ 24 Vdc	Changeover relay max 1 A, 30 Vdc	7	4,0 m	IP 67	0,79 Kg	
2450-NM	12/24 Vdc	10 mA @ 12 Vdc 13 mA @ 24 Vdc	25 mA @ 12 Vdc 32 mA @ 24 Vdc	Changeover relay max 1 A, 30 Vdc	7 terminals	-	IP 65	0,50 Kg	Adjustable sensitivity