

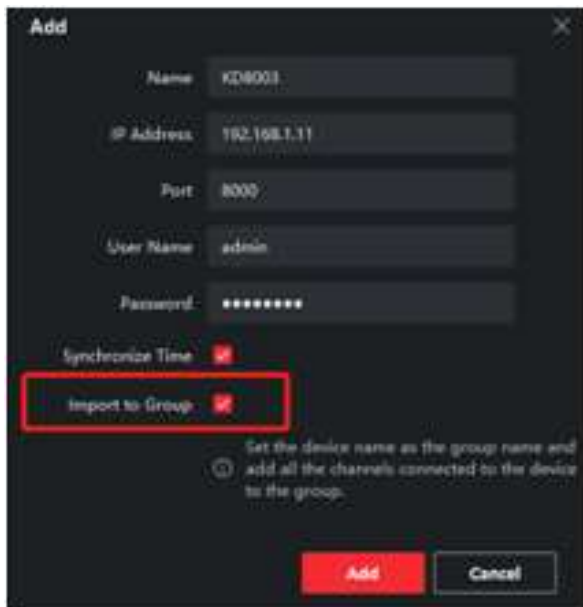
## Hikvision modularna portafonija – konfiguracija liste kontakata na DS-KD-DIS modulu



## Konfiguracija liste kontakata

Programiranje modula se vrši putem iVMS-a verzije 3.x kojeg možete preuzeti na ovom [linku](#).

Nakon instalacije softvera potrebno je dodati modul vanjske jedinice u softver i kreirati mu grupu:



**Add**

Name: KD8003

IP Address: 192.168.1.11

Port: 8000

User Name: admin

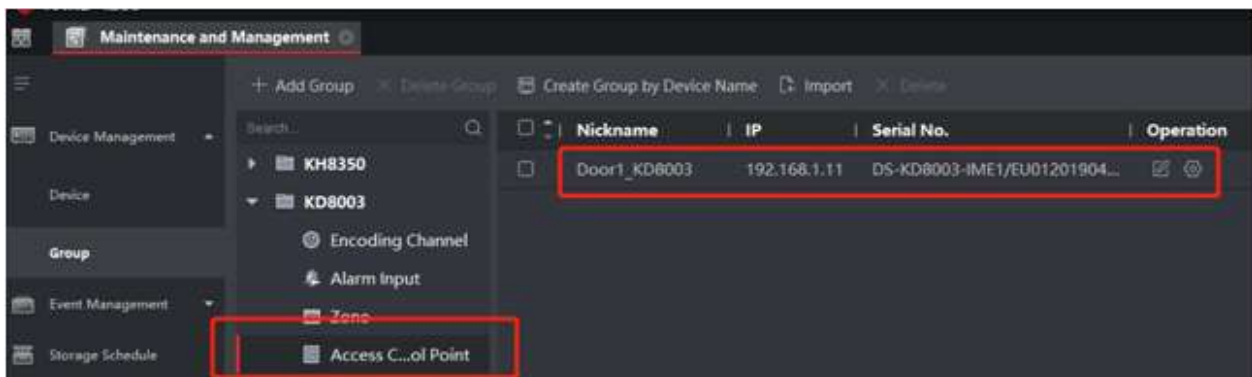
Password: \*\*\*\*\*

Synchronize Time

**Import to Group**

Set the device name as the group name and add all the channels connected to the device to the group.

Add Cancel



Maintenance and Management

+ Add Group -x Delete Group Create Group by Device Name Import Delete

Search...

Device Management

Device

Group

Event Management

Storage Schedule

KH8350

KD8003

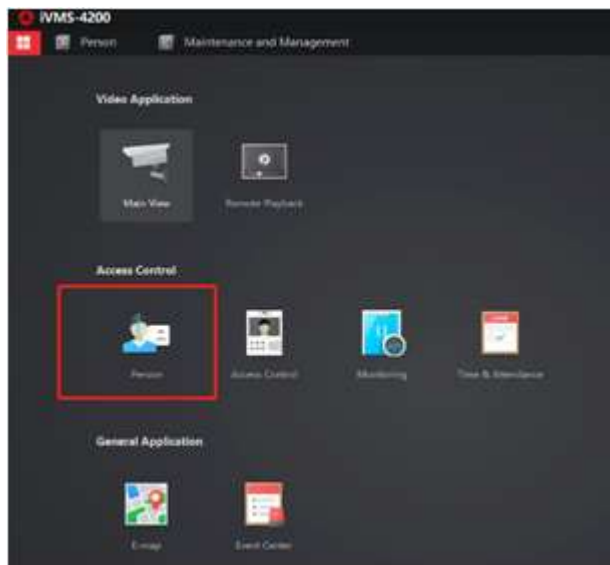
- Encoding Channel
- Alarm Input
- Zone
- Access Control Point**

Nickname	IP	Serial No.	Operation
Door1_KD8003	192.168.1.11	DS-KD8003-IME1/EU01201904...	

Na unutarnjim jedinicama je potrebno odrediti broj sobe i kata:



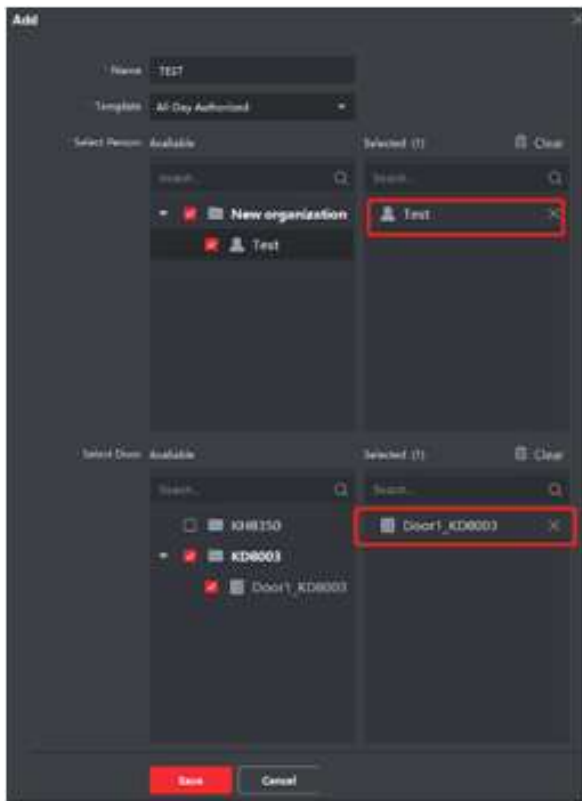
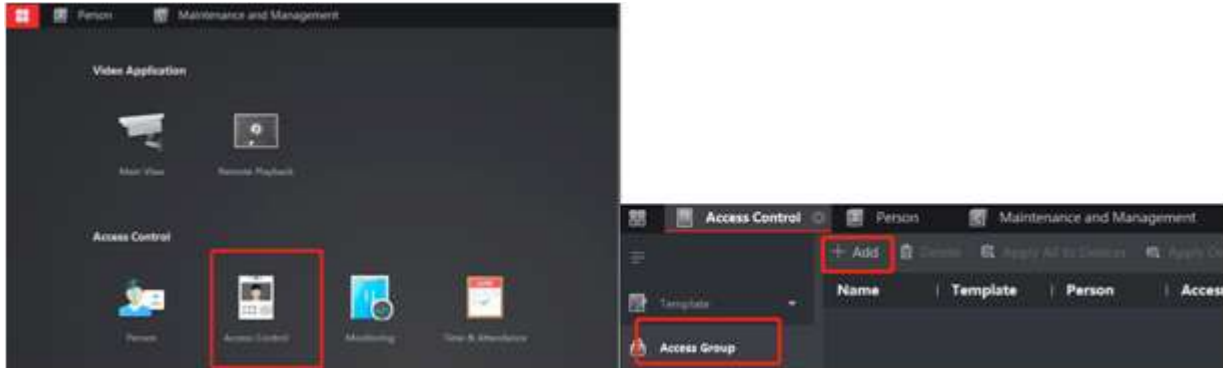
Zatim odabrati **Person** modul:



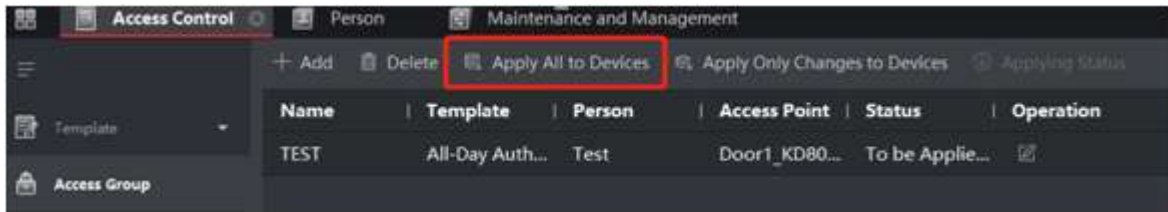
Klikom na **Add** dodajte korisnika i upišite mu broj sobe i kata pod **Resident information**:



Zatim odabрати **Access Control > Access Group > Add** kako bi se povezoao korisnik sa brojem sobe:



Potvrditi na **Apply to Device**:



Na Display modulu ispisiuje se **Importing**. Nakon što se import završi trebali biste moći izvršiti poziv preko imenika:

