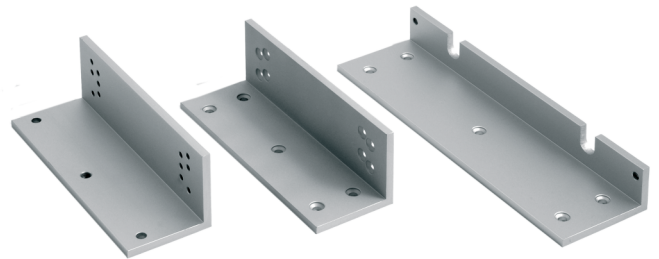


FE160ZL

L and Z Kit for Inward opening Doors for Eco Line Magnets (FE160 series)

Description

For inward opening doors. Mounting brackets for the FE160xx series magnets.



FE160ZL

L and Z Kit for Inward opening Doors for Eco Line Magnets (FE160 series)

Technical specifications

General

Product type	Mounting bracket
--------------	------------------

Holding force

Holding force kgf (Kilogram force)	600 kgf
---------------------------------------	---------

Holding force N (Newton)	6000
--------------------------	------

Physical

Physical dimensions	185 x 63 x 63 mm (Z bracket) / 266 x 76 x 37 (L bracket)
---------------------	--

Colour	Aluminium
--------	-----------

Finish	Vapour blasted aluminium
--------	--------------------------

